



CobraNet™ Interface

Update Guide

This update guide describes how to update the CobraNet Interface firmware for Yamaha CobraNet devices (ACU16-C, NHB32-C, MY16-C, MY16-CII, DME8i-C, DME8o-C, DME4io-C).

Contents

1. Preparation.....	2
1.1. System Requirements	2
1.2. Connection.....	3
1.3. Installation and Default Setting of CobraNet Discovery.....	4
1.4. IP Address Manual Setting (If not updated properly by Automatic Setting)....	7
2. Updating Procedure	9
2.1. Checking Your Current Firmware Version.....	9
2.2. Uploading the Latest Firmware Version	9

Special Notices

- All copyrights of this update guide are proprietary to Yamaha Corporation.
- Copying and reproduction of this update guide in whole or in part by any means is expressly forbidden without the written consent of Yamaha Corporation.
- Yamaha makes no representations or warranties with regard to the use of this update guide and cannot be held responsible for the results of the use of this guide.
- The illustrations and LCD screens as shown in this update guide are for instructional purposes only, and may appear somewhat different from those on the final specifications.
- For any changes on the firmware, some functions or specifications resulting from the version upgrades, please check the following Yamaha website.
<http://www.yamahaproaudio.com/>
- “CobraNet” and “CobraNet Discovery” are registered trademarks of Cirrus Logic, Inc.
- All company names and product names are trademarks or registered trademarks of their respective companies.
- Specification in this document is subject to change without notice due to continual improvements.

1. Preparation

1.1. System Requirements

To update the CobraNet Interface following hardware and software are required.

Computer

Running Windows NT 4.0/2000/XP with a LAN connector

Cables

Either of the following is required for connection.

- One Ethernet category 5 cross cable
- or
- Two Ethernet category 5 straight cables and a switching hub

CobraNet Devices to be updated

ACU16-C, NHB32-C, MY16-C, MY16-CII, DME8i-C, DME8o-C or DME4io-C

CobraNet Discovery

This is application software developed by Cirrus Logic, Inc. for monitoring/maintaining the CobraNet network. In this update guide, it is used to update the CobraNet Interface firmware.

If you do not have the software, download from the following URL.

<http://www.cirrus.com/dispatch/forms/sup/boardreg/breg/BregController.jpf>

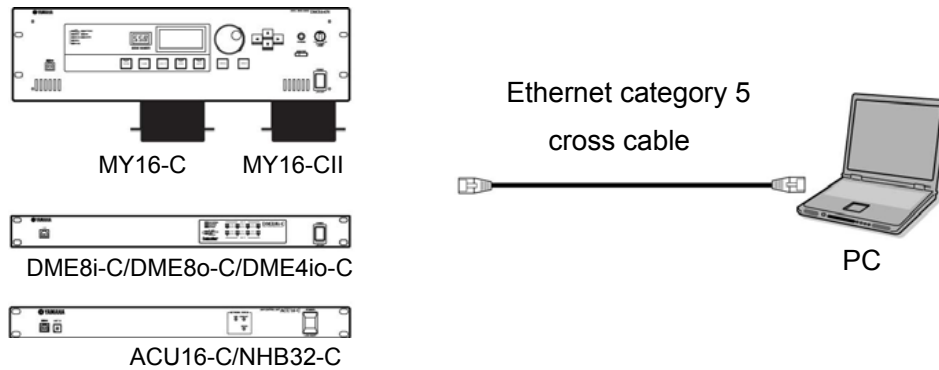
CobraNet Interface Firmware

Download the compressed firmware file to update your device from the Yamaha website and uncompress.

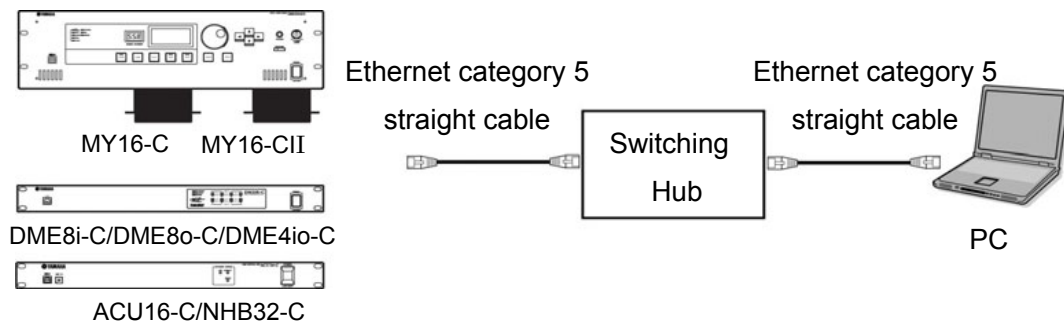
Caution: *The particular firmware differs depending on the device to be updated. Do not update firmware provided by a third party other than Yamaha. Updating firmware for different devices or firmware provided by a third party other than Yamaha may cause your device to become unstable.*

1.2. Connection

When you use a cross cable, connect a PC LAN connector directly to the CobraNet device connector (PRIMARY or SECONDARY connector) as shown below:



When you use straight cables, connect a PC LAN connector via the switching hub to the CobraNet device connector (PRIMARY or SECONDARY connector) as shown below:



1.3. Installation and Default Setting of CobraNet Discovery

Follow the instructions below to install CobraNet Discovery and make the default settings.

1. Download the installer of the CobraNet Discovery from the following Cirrus Logic, Inc website and install.

<http://www.cirrus.com/dispatch/forms/sup/boardreg/breg/BregController.jspf>

2. Copy the firmware you wish to update to the following folder.

C:\Program Files\Cirrus Logic\CobraNet Discovery\firmware

Above folder name differs if you change the desired destination of CobraNet Discovery from the default setting.

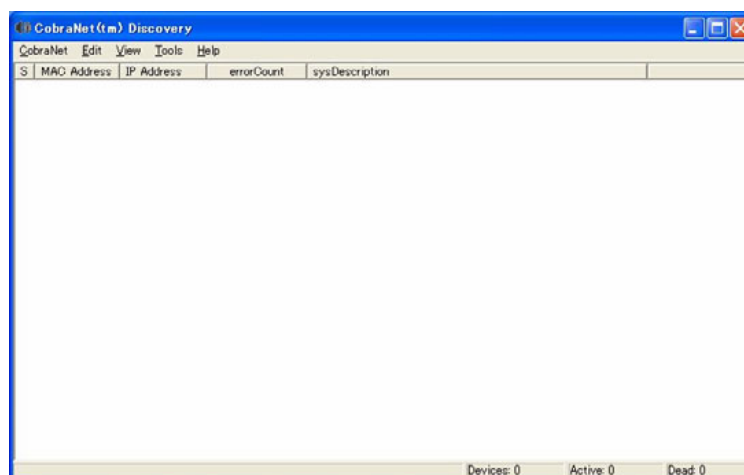
Firmware file names depend on the devices.

Device	Firmware File Name
ACU16-C / NHB32-C	acu16_x_x_x.bin
MY16-C	my16c_x_x_x.bin
MY16-CII	YAMAHA-MY16CII_x_x_x.bin
DME8i-C/DME8o-C/DME4io-C	YAMAHA-SATELLITE_x_x_x.bin

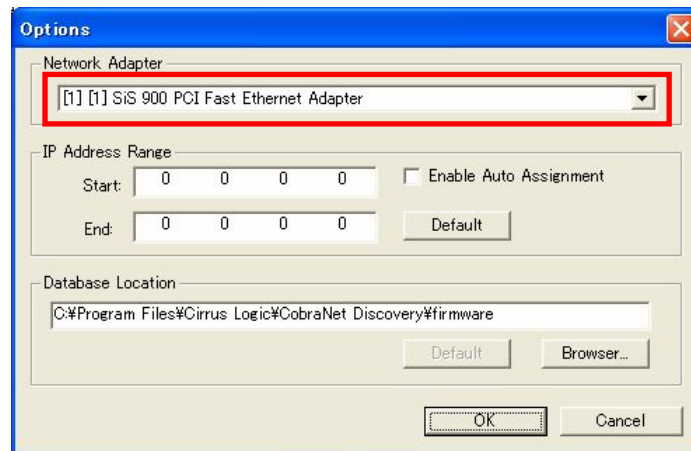
“x_x_x” represents the version number

Caution: Do not update firmware provided by a third party other than Yamaha. Updating firmware for different devices or firmware provided by a third party other than Yamaha may cause your device to become unstable.

3. Select [All Programs | CobraNet Discovery | CobraNet Discovery] from the “Start” menu to launch CobraNet Discovery.

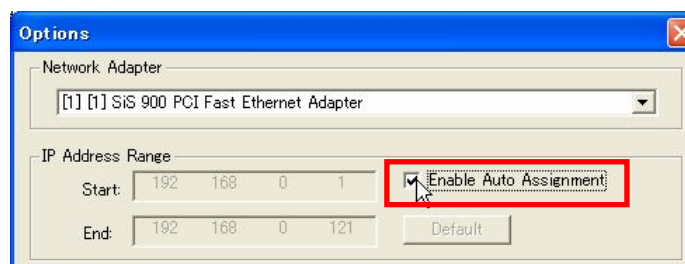
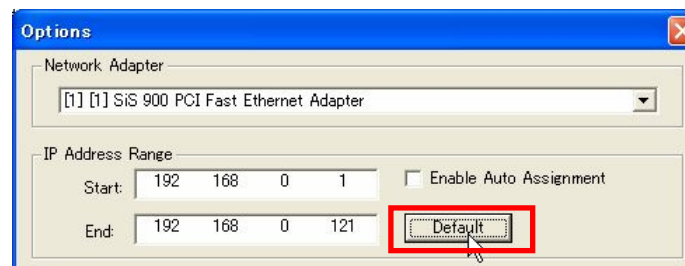


4. Select "Options" from the "View" menu. The "Options" dialog box appears. Select the network adapter used to connect the device you wish to update from "Network Adapter" list.



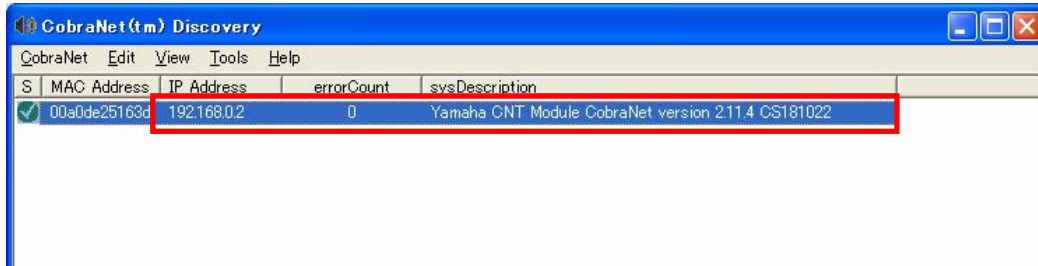
5. Click the [Default] button in the "IP Address Range" field to assign the IP Address automatically, and then check [Enable Auto Assignment].

You should enable automatic assignment of the IP Address. However, the IP address should be assigned manually if it cannot be updated properly by automatic setting. (See page 7)



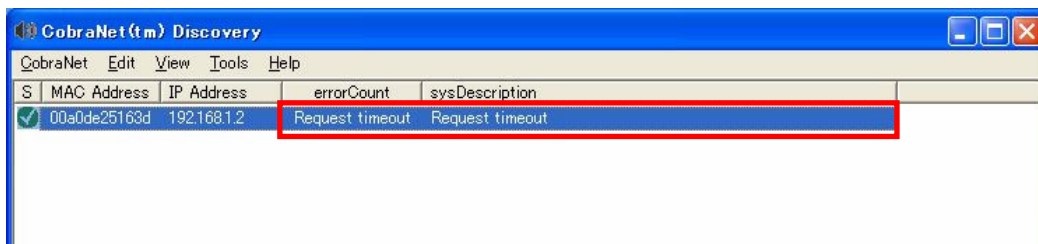
6. Click [OK] to close the dialog box.
7. Turn on the device while connecting to the device you wish to update.

8. The IP Address will appear in the “IP Address” column in the CobraNet Discovery main window once the IP Address of the device has been assigned. A number and firmware name/version number will appear in the “errorCount” column and the “sysDescription” column.



If nothing appears in those columns, the device has not been correctly detected. Check again the cable connection and the network adapter.

If “Request timeout” appears in the “errorCount” column and the “sysDescription” column as shown below, the IP Address is not assigned properly. Follow the “1.4. IP Address Manual Setting” on page 7 and assign the IP Address manually.

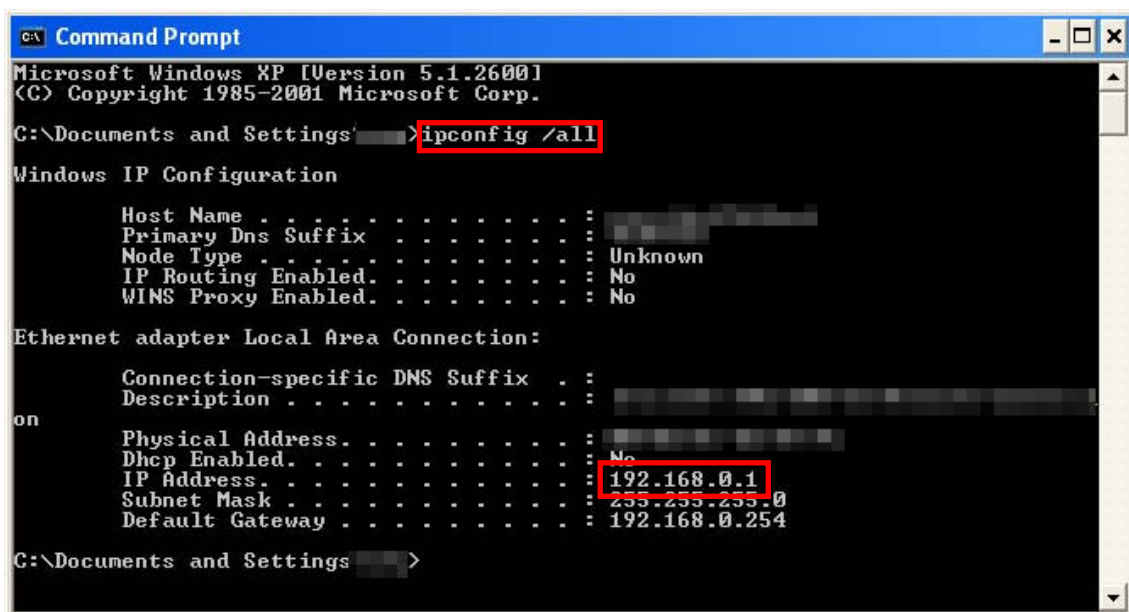


If the IP Address is set properly, preparation has been completed. Go to “2. Updating procedure” (page 9).

1.4. IP Address Manual Setting (if not updated properly by Automatic Setting)

The manual setting is not required if it has been automatically assigned. Follow the procedure below to set the IP Address manually.

1. Select [All Programs | Accessory | Command Prompt] from the “Start” menu to open the window for PC’s IP Address check.
2. Type “ipconfig /all” in the Command Prompt to call up the following display.
The PC’s IP address is a number shown at the “IP address.” The example IP address “192.168.0.1” is shown below.



```
C:\ Command Prompt
Microsoft Windows XP [Version 5.1.2600]
(C) Copyright 1985-2001 Microsoft Corp.

C:\Documents and Settings\> ipconfig /all

Windows IP Configuration

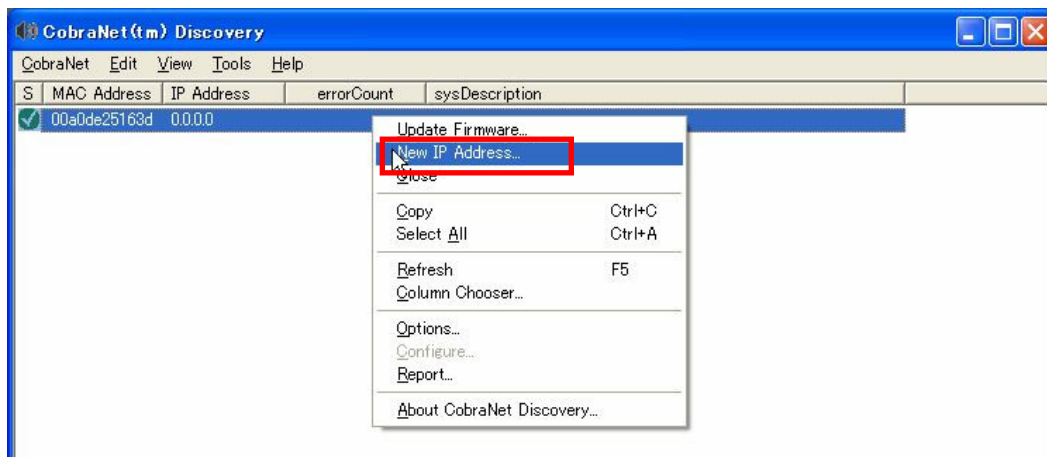
    Host Name . . . . . : 
    Primary Dns Suffix . . . . . : 
    Node Type . . . . . : Unknown
    IP Routing Enabled. . . . . : No
    WINS Proxy Enabled. . . . . : No

Ethernet adapter Local Area Connection:

    Connection-specific DNS Suffix . : 
    Description . . . . . : 
    Physical Address. . . . . : 
    Dhcp Enabled. . . . . : No
    IP Address. . . . . : 192.168.0.1
    Subnet Mask . . . . . : 255.255.255.0
    Default Gateway . . . . . : 192.168.0.254

C:\Documents and Settings\>
```

3. Right-click on the device you wish to update in the CobraNet Discovery window, and select “New IP Address” from the pop-up menu.

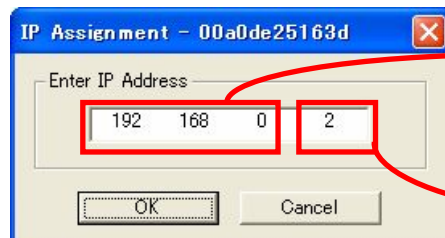


4. The dialog box for setting the IP Address will appear.



5. Enter the IP Address as shown below.

Enter the same numbers of the PC's IP Address for the first three numbers. If the PC's IP Address is "192.168.0.1," enter the first three numbers as "192.168.0." Enter a number between 1 and 254, which should be different from the PC's IP Address, for the last number. If the last number of the PC's IP Address is "1," enter "2" or another number except "1".



The first three numbers are the same numbers as PC's IP Address.

The last number is the number between 1 and 254 which is different from PC's number.

6. Click [OK] to close the dialog box.

If the following warning message appears, click [OK] to close the dialog box.



Preparation is now complete.

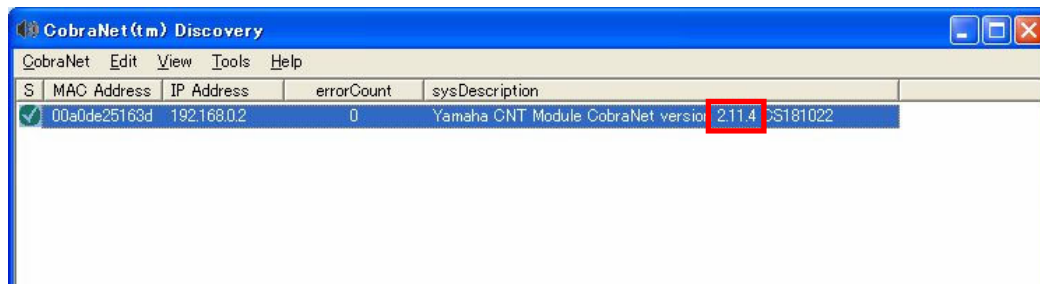
2. Updating Procedure

2.1. Checking Your Current Firmware Version

Connect to the device you wish to update before turning on the device and then launch CobraNet Discovery.

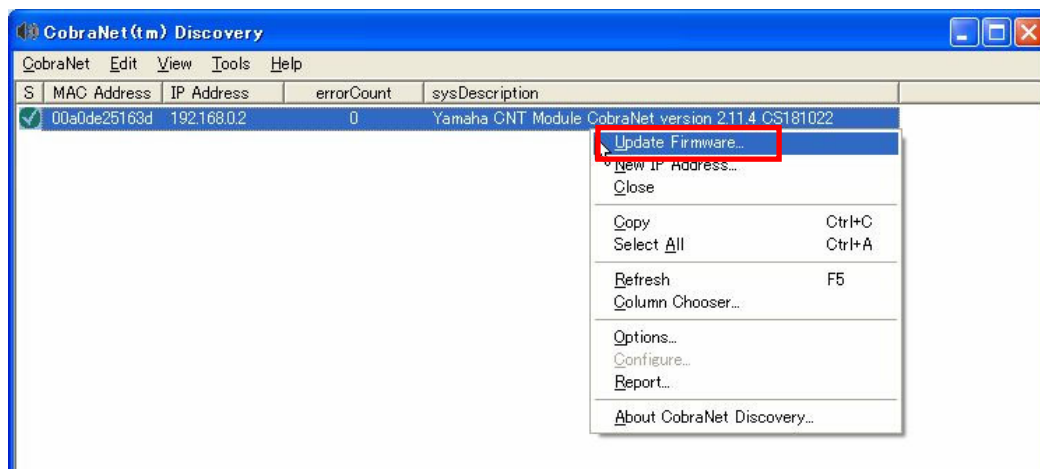
The current firmware version will be shown such as “Yamaha CNT Module CobraNet version 2.11.4 CS181022” in the “sysDescription” column in the CobraNet Discovery main window. The number which is shown immediately after the CobraNet version is the current firmware version number. It should be updated if the latest version provided by Yamaha is older than this number.

The following example shows 2.11.4. If the latest version provided by Yamaha is 2.11.5 or later, updating is required.



2.2. Uploading the Latest Firmware Version

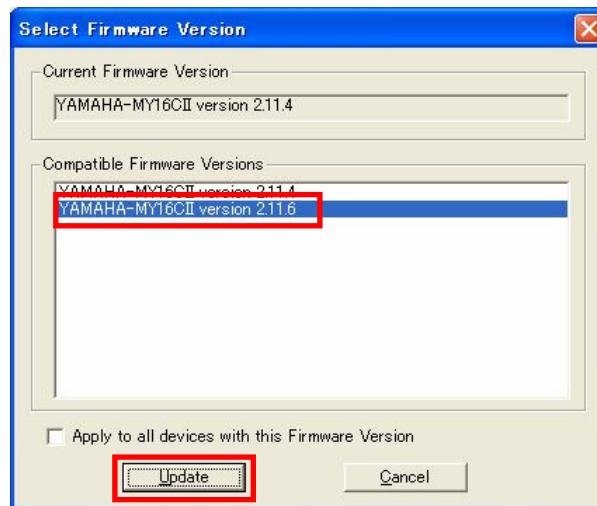
1. Right-click on the device you wish to update in the CobraNet Discovery window, and select “Update Firmware” from the pop-up menu.



2. “Select Firmware Version” dialog box will appear after the progress bar is shown for a while as shown below.



3. Check that the firmware version you wish to update is selected in the “Compatible Firmware Versions” field in the “Select Firmware Version” dialog box.
When you wish to update MY16-CII, check that “YAMAHA-MY16CII version x.x.x” is selected (x.x.x represents the version number; the example below is 2.11.6).



4. Click [Update] to start updating. The following progress bar will be shown while updating.

Caution: Do not turn the power off while this progress bar is shown on the display. Never turn the power off during updating, since this may damage the firmware and cause the device to malfunction.



5. Click [OK] to close the pop-up window below and turn off the device.



6. Turn on the device again.

Updating is now complete.

U.R.G., Pro Audio & Digital Musical Instrument Division, Yamaha Corporation

© 2006 Yamaha Corporation

A0