



# NUAGE

**NUAGE MASTER**

CONTROL SURFACE  
**Ncs500-CT**

**NUAGE FADER**

CONTROL SURFACE  
**Ncs500-FD**

**NUAGE I/O**

AUDIO INTERFACE  
**Nio500-D16/A16/A8D8**

## V1.6 Supplementary Manual

This supplementary manual explains features and functions that have been added or changed in NUAGE V1.6. Please read this manual together with other related NUAGE manuals.

### Main changes

• Added support for Cubase Pro 8	(Nuage Master, Nuage Fader)	<a href="#">page 2</a>
• Updated Direct Monitoring window in Nuage I/O Setup	(Nuage I/O)	<a href="#">page 4</a>
• Added stereo panner switching function	(Nuage Fader)	<a href="#">page 4</a>
• Added more parameters to Channel Strip section	(Nuage Fader)	<a href="#">page 5</a>
• Added support for switching parameters in Channel Setting mode	(Nuage Fader)	<a href="#">page 5</a>
• Added key function (shortcut) for dividing events into selected ranges	(Nuage Master)	<a href="#">page 5</a>
• Added collective bypass function for inserts	(Nuage Fader)	<a href="#">page 6</a>
• Added collective bypass function for dynamics	(Nuage Master)	<a href="#">page 6</a>
• Added support for switching between multiple Avid Pro Tools	(NUAGE Workgroup Manager)	<a href="#">page 6</a>
• Added support for remote operation of the RMio64-D	(NUAGE Workgroup Manager)	<a href="#">page 7</a>
• Changed display on the Marker Jump pop-up window into the list display	(Nuage Master)	<a href="#">page 8</a>
• Added a function for Project cursor positioning	(Nuage Master)	<a href="#">page 8</a>
• Added enable/disable selection for [Jog wheel] during project playback	(Nuage Master)	<a href="#">page 9</a>

## Added Support for Cubase Pro 8 (Nuage Master, Nuage Fader)

Cubase Pro 8 is now supported. The following new functions are also supported.

### VCA Fader

You can show/hide the VCA Fader with [OTHERS] in the CHANNEL VIEW CONTROL section.

### DeEsser

You can now adjust the DeEsser parameters with Nuage Fader and Nuage Master.  
(The Nuage Master window is shown below.)



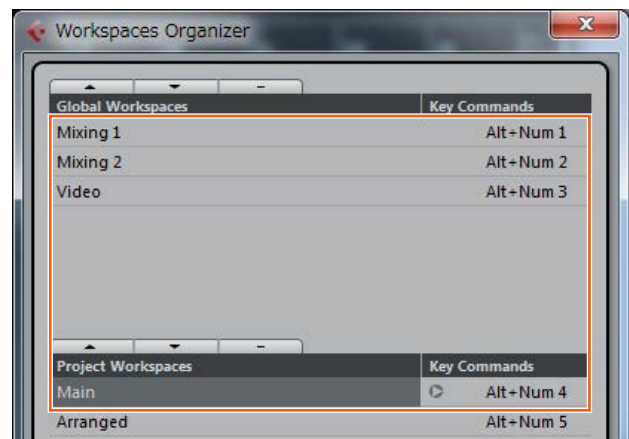
### Plug-in Manager

If you create a collection and then select that collection, only the plug-in effects in the selected collection are shown in the list when “Insert” is selected.  
In the Nuage Master [Multi function display], the display of folder structures is limited to two levels. Plug-in effects that are actually located beyond the second level are all displayed in the second level.

### Workspace Extension

The first four workspaces displayed in “Workspace Organizer” can be loaded from the WORKSPACE section in Nuage Fader.

For example, if there are three “Global Workspaces” and two “Project Workspaces,” the three “Global Workspaces” and then one “Project Workspace” are assigned successively to [WORKSPACE 1] to [WORKSPACE 4].



### High Cut and Low Cut Filter Slopes

- You can adjust the “High Cut” and “Low Cut” slopes in the Nuage Fader channel strip ([page 5](#)).
- You can adjust the following parameters on the MAIN page of Nuage Master CHANNEL CONTROL.



#### 1 BYP

Turns the input filter “Bypass” on (lit) and off (dim).

#### 2 Preset

Opens the window for selecting input filter presets.

#### 3 Filter Slope Settings

Enables you to select the “High Cut” and “Low Cut” filter slopes.

- The EQ graphs in Nuage Master and Nuage Fader now support filter slopes.

#### CHANNEL CONTROL – EQ Page



## Channel Strip

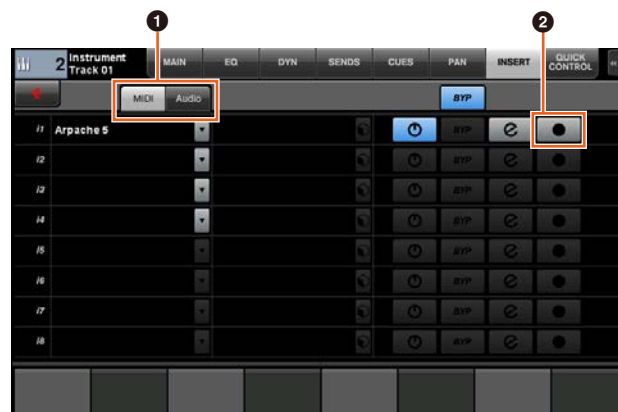


## Channel Setting Mode



## Recording MIDI Events to the Tracks

You can adjust the following parameters on the INSERT page of Nuage Master CHANNEL CONTROL.



### ① MIDI/Audio (Only for Instrument Tracks)

Switches the type of plug-in. To record the MIDI events, select "MIDI."

### ② ● (Record Output to Track)

Selects (lit) and deselects (dim) a MIDI track or instrument track as the recording destination for a MIDI event.

## Pre-Fader/Post-Fader Switching for MIDI Sends

You can adjust the following parameters on the SENDS page of Nuage Master CHANNEL CONTROL.



### PRE

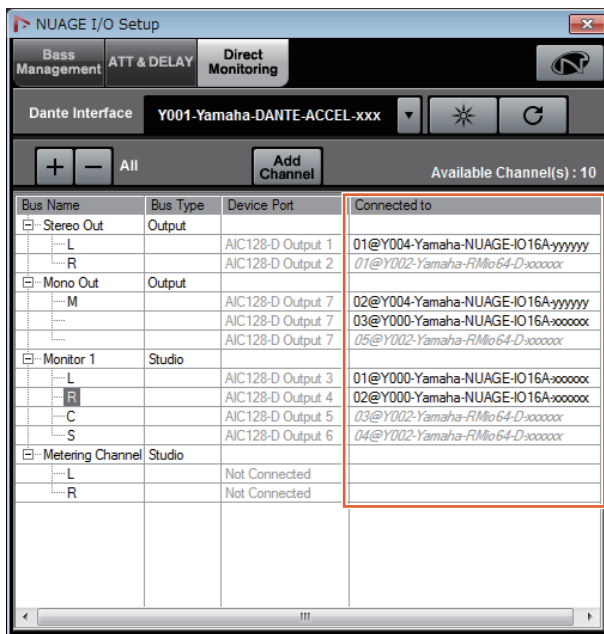
Switches MIDI channels between "Pre-Fader" and "Post-Fader." You can also use [Multi function button B] to switch between "Pre-Fader" and "Post-Fader."

## Updated Direct Monitoring Window in Nuage I/O Setup (Nuage I/O)

The connection destinations for output buses that are the targets of direct monitoring are now displayed in the Direct Monitoring window in NUAGE I/O Setup. Available Nuage I/O ports are displayed in the “Connected to” column.

To open the NUAGE I/O Setup window, in the Nuendo menu select “Devices,” then “NUAGE I/O Setup.”

## NUAGE I/O Setup – Direct Monitoring Window



### NOTE

- If a single Dante Accelerator output port is connected to multiple Nuage I/O ports, the relevant ports are listed vertically.
- Nuage I/O not included in the NUAGE Workgroup are displayed in gray italics and are not available for direct monitoring.
- An RMio64-D assigned to the same output bus as Nuage I/O will be displayed in gray italics regardless of whether direct monitoring is enabled or disabled. For more information about direct monitoring with the RMio64-D, refer to the RMio64-D Owner's Manual.
- If input from Nuage I/O and input from RMio64-D are mixed and then output for direct monitoring to the same Nuage I/O port, only the input from Nuage I/O is output.

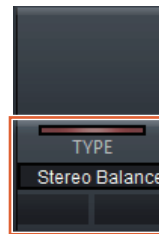
## Added Stereo Panner Switching Function (Nuage Fader)

You can now switch between the types of stereo panners in Nuage Fader.

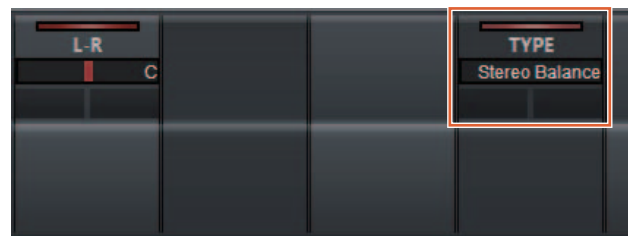
### Operation

1. Press [PAN] in the SECTION CONTROL section.
2. (In Channel Strip display only) Press [Sub Parameter 2].  
The type of stereo panner is displayed in the label area.
3. Press the corresponding [Multi function knob].  
A pop-up menu for selecting a stereo panner is displayed.
4. Turn the [Multi function knob] to select the type of stereo panner.
5. Press the [Multi function knob] once again to confirm the selection.

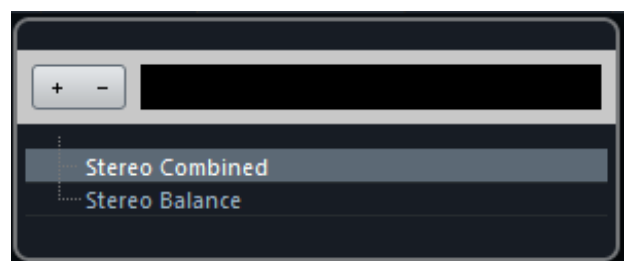
### Channel Strip



### Channel Setting Mode



### Pop-Up



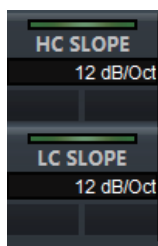
## Added More Parameters to Channel Strip Section (Nuage Fader)

You can now adjust HC SLOPE, LC SLOPE, GAIN,  $\phi$  (PHASE), HA HPF, and HA +48V in the channel strip. HA GAIN and HA GC, which were previously assigned to [Sub parameter 2], have been moved to [Sub parameter 4].

### Operation

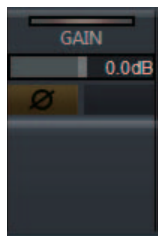
1. Press [PRE] in the SECTION CONTROL section.
2. Press one of the parameters in [Sub parameter 2] to [Sub parameter 5].  
The parameters below are displayed in the label area.
3. Adjust the parameter using the corresponding [Multi function knob] or [Multi function button].

### Sub parameter 2



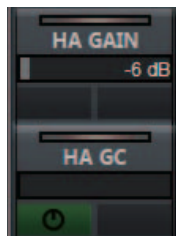
HC SLOPE, LC SLOPE

### Sub parameter 3



GAIN,  $\phi$  (PHASE)

### Sub parameter 4



HA GAIN, HA GC  
(for Rio3224-D/Rio1608-D remote control)

HA GAIN, HA TRIM  
(for AD8HR remote control)

### Sub parameter 5



HA HPF, HA +48V  
(for HA remote control)

## Added Support for Switching Parameters in Channel Setting Mode (Nuage Fader)

You can now switch sub-parameters in the Channel Setting mode to make adjustments to parameters.

### NOTE

Only the following two types of “Dynamics” are currently supported:

- DeEsser (Cubase Pro 8 and later)
- Envelope Shaper

### Operation

With either DeEsser or Envelope Shaper selected in “Dynamics” in the channel displayed in Channel Setting mode, do the following:

1. Press [DYN] in the SECTION CONTROL section.
2. Press [Sub parameter 2].  
The parameter display in the label area is switched.
3. Adjust the parameter using the corresponding [Multi function knob] or [Multi function button].

## Added Key Function (Shortcut) for Dividing Events into Selected Ranges (Nuage Master)

You can now use key function (shortcut) in Nuage Master to divide events into selected ranges.

### Operation

1. In the Nuendo Project window, use the range selection tool to select the range for dividing a track.
2. Press and hold [SHIFT] in the MODIFIER section while holding down [SPLIT] in the JOG WHEEL section.

The event is divided into the selected ranges.

## Added Collective Bypass Function for Inserts (Nuage Fader)

You can now turn bypass on/off for “Inserts” on the selected channels.

### Operation

1. Press [INSERT] in the SECTION CONTROL section.  
“INSERTS” is displayed in the label area.
2. Press [Multi function button A] corresponding to the window to switch bypass on/off for “Inserts.”

### Channel Strip



### Channel Setting Mode



### NOTE

If you press [Sub parameter 1] through [Sub parameter 8] in Channel Setting mode, the window for the “Inserts” assigned to the relevant slot is displayed. Press the same button once again to close the window.

This function is disabled if two channels are displayed in Channel Setting mode.

## Added Collective Bypass Function for Dynamics (Nuage Master)

You can now turn bypass on/off for “Dynamics” on the selected channels.

### Operation

1. Select the track for turning dynamics on/off.
2. Press [DYNAMICS] in the MULTI FUNCTION DISPLAY section.  
The CHANNEL CONTROL – DYN page is displayed in the [Multi function display].
3. Touch “BYP” on the screen to turn bypass on/off for “Dynamics.”

### CHANNEL CONTROL – DYN Page

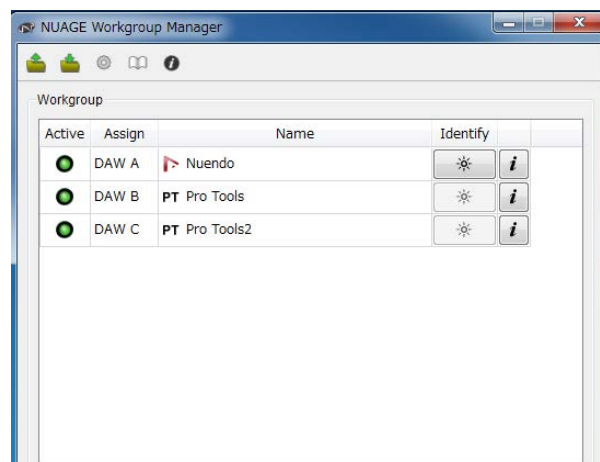


## Added Support for Switching between Multiple Avid Pro Tools (NUAGE Workgroup Manager)

You can now register two Avid Pro Tools in a Workgroup. (Previously, it was possible to register only one.)

### NOTE

For more information about Avid Pro Tools settings, refer to the operation manual for Nuage Master or Nuage Fader.



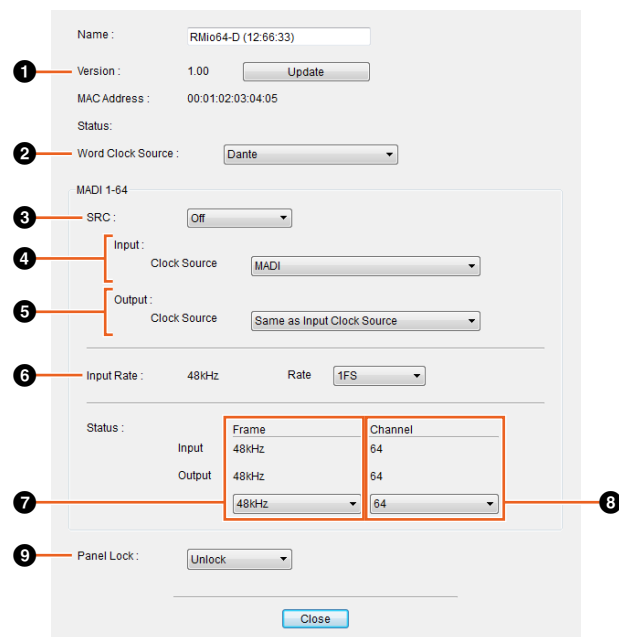
# Added Support for RMio64-D (NUAGE Workgroup Manager)

You can now control the RMio64-D Dante/MADI conversion audio interface remotely from NUAGE Workgroup Manager.

## NOTE

- For remote control operation, the target RMio64-D must be active in NUAGE Workgroup.
- Modifications to parameters are applied to the RMio64-D unit as soon as they are changed.
- A total of eight Nuage I/O and RMio64-D units can be registered in a Workgroup.

## RMio64-D – Property Window



The parameters that can be controlled are as follows:

### 1 Version

Displays the firmware version of the RMio64-D unit. You can update the firmware by clicking “Update.”

### 2 Word Clock Source

Enables you to select the word clock source for the RMio64-D (from Dante/WCLK IN/MADI).

### 3 SRC

Enables you to turn MADI SRC (Sampling Rate Converter) on/off.

### 4 Input Clock Source

Enables you to select the word clock source for SRC input (from MADI/WCLK IN for SRC).

### 5 Output Clock Source

Enables you to select the MADI output signal when SRC is on as the word clock source.

Same as Input Clock Source	Syncs the MADI output signal with the MADI input signal.
----------------------------	--

Same as Word Clock Source	Syncs the MADI output signal with the RMio64-D clock.
---------------------------	---

### 6 Input Rate

Enables you to select from 1Fs (1x)/2Fs (2x)/4Fs (4x) according to the MADI input frequency. For example, if the MADI input signal is 192 kHz (4x 48 kHz), select “4Fs.”

### 7 MADI Output Frame

Enables you to select the frame frequency for the MADI output signal. It is possible for the selected value to differ from the actual frequency. For example, when the setting is “96kHz” and the actual frequency is “48kHz,” for example, “96kHz >> 48kHz” is displayed.

Same as Input	Outputs the same frame frequency as the MADI input signal.
---------------	--

48kHz	Outputs at 44.1 kHz or 48 kHz.
-------	--------------------------------

96kHz	Outputs at 88.2 kHz or 96 kHz.
-------	--------------------------------

### 8 MADI Output Channel

Enables you to select the number of channels for the MADI output signal. It is possible for the selected value to differ from the actual number of channels. When the setting is “64” and the actual number of channels is “56,” for example, “64 >> 56” is displayed.

Same as Input	Outputs the same number of channels as the MADI input signal.
---------------	---

64	Outputs on 64 channels.
----	-------------------------

56	Outputs on 56 channels.
----	-------------------------

### 9 Panel Lock

Unlocks/locks panel operation for the RMio64-D unit.

## MADI Output Signal when SRC is On

Input Clock Source	Output Clock Source	MADI Output Signal
MADI	Same as Input Clock Source	Synced with MADI Input Signal
MADI	Same as Word Clock Source	Synced with RMio64-D clock
WCLK IN for SRC	Same as Input Clock Source	Synced with word clock input from WCLK IN for SRC
WCLK IN for SRC	Same as Word Clock Source	Synced with RMio64-D clock

## Changed Display on the Marker Jump Pop-Up Window into the List Display (Nuage Master)

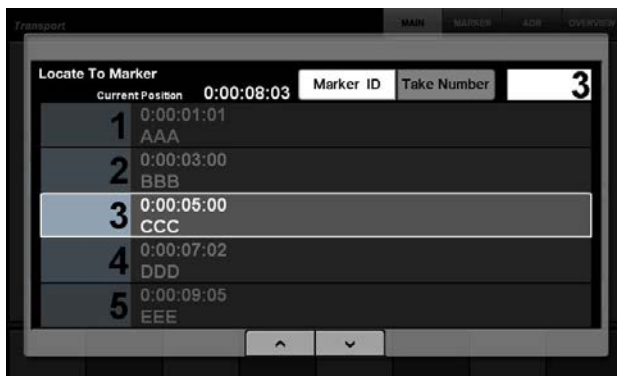
The pop-up display for the Marker Jump function and Cycle Marker jump function has been changed to a list display. Nearby markers are displayed in relation to the entered "Marker ID."

### Operation

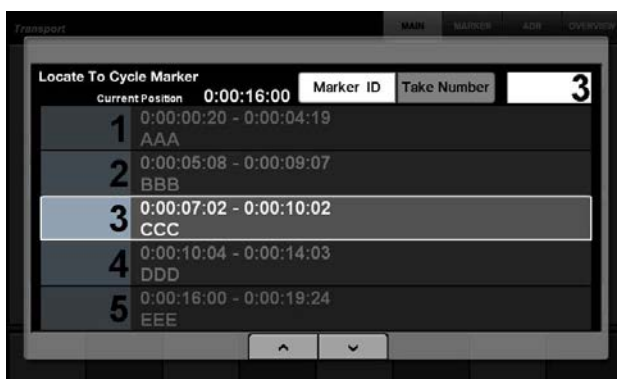
1. Press [MARKER] in the NUMERIC PAD section.
2. Press one of the following keys: [0] through [9], [BACK SPACE], [CLEAR], [PREV -], [NEXT +], [CYCLE .], or [ENTER].

The following pop-up is displayed in the [Multi function display].

### Marker Pop-Up



### Cycle Marker Pop-Up



### NOTE

- You can use [Up/Down Arrow] at the bottom of the window to scroll through the window.
- Since Cubase does not have an ADR function, Marker ID/Take Number are not displayed in the window.

## Added a Function for Project Cursor Positioning (Nuage Master)

You can now enter values in units of hours, minutes, and seconds to position the "Project Cursor" on the TRANSPORT page.

### Settings

Switch the input method in "Numeric Pad Input" on SETUP Page – PAGE 3.

### SETUP Page – PAGE 3



Left Enter values in units of hours, minutes, and seconds.

Right Conventional method (text input)

### NOTE

If you change this setting, the input method in the Locate function is also changed.

### Operation

1. Press [Display access] in the TRANSPORT section.
2. Press [PARAM] in the NUMERIC PAD section.
3. Touch "Time Display" on the screen.
4. Use the keys in the NUMERIC PAD section to enter the position of the Project cursor.

### TRANSPORT – MAIN Page



# Added Enable/Disable Selection for [Jog wheel] during Project Playback (Nuage Master)

You can now disable [Jog wheel] operation during Project playback. Doing so will prevent unintended operation of the Project cursor during playback.

## Settings

Switch the setting by using the “JOG Operation during Playback” control on SETUP Page – PAGE 3.

## SETUP Page – PAGE 3



On	Enables [Jog wheel] operation during Project playback.
Off	Disables [Jog wheel] operation during Project playback.



Yamaha Pro Audio global web site:  
<http://www.yamahaproaudio.com/>  
Yamaha Manual Library  
<http://www.yamaha.co.jp/manual/>

Manual Development Department  
© 2014 Yamaha Corporation  
412MW-A0