

## *Unleash Your Music's Inner Voice*

*All too often, we find ourselves caught up in today's rapid cycle of mass production, high-speed consumption, and urban sprawl. All symbols of our times, and the way many of us live, but what if there is something more...*

*We've known since ancient times, that music is great for the soul. It releases your creative energy, lets you connect with friends and strangers alike, and provides an escape from the daily grind—that much needed release that we often want. But even that can get caught up in modern life—faster, bigger, louder...*

*where does it all end.*

*Sometimes it's best to strip things down, go back to the basics, and revisit your roots and the reason you picked up the guitar in the first place. Take the time to experience the NX Series, re-connect with your music and unleash your music's inner voice.*



# What Is The NX Series—1. ~ Appearance ~

BLUES

ROCK

POP

CLASSICAL

JAZZ

LATIN

## Headstock Design

The striking head design blends traditional design with contemporary cues and powerful imagery setting the NX Series apart from the rest. High precision machine heads offer tuning ease.

## Warm Wood Rosette

The sound hole is decorated with an original inlay design of mahogany, padauk, and abalone. The NCX Series uses a round hole shape (left) while the NTX Series is elliptical (right).

## Smiling Bridge

This distinct bridge design is a trait of the NX series.



NCX Line



NTX Line



# What Is The NX Series-2.

## ~ Specifications ~

### Classical Style

Classical, Flamenco, Latin, or Pop, whatever your style, these guitars play and sound great thanks to a traditional design ready to accommodate a wide range of playing styles.



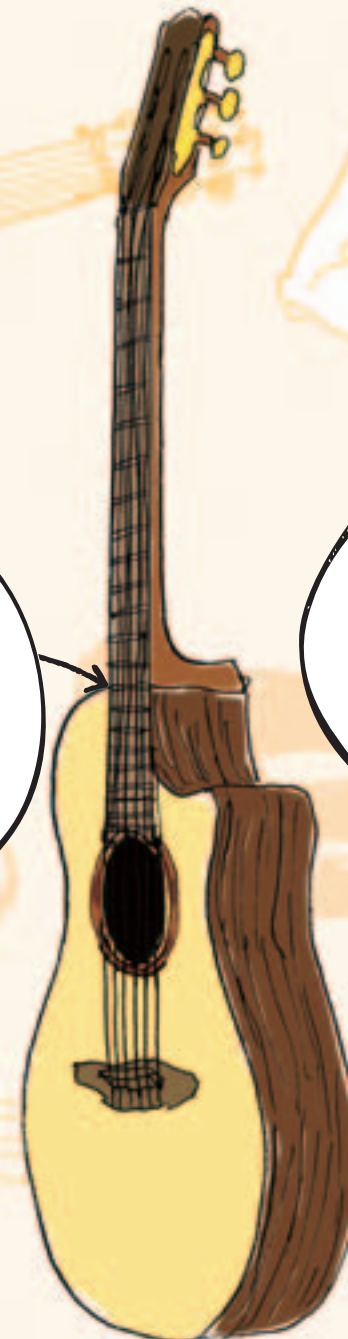
NCX Line

### 12<sup>th</sup> Fret Neck Joint

The neck shape is identical to that on a classical guitar. The fingerboard measures 52mm at the nut and 62mm at the joint.

### 14<sup>th</sup> Fret Neck Joint

Thinner neck shape like that on a steel string acoustic. The fingerboard measures 48mm at the nut and 57mm at the joint.



NTX Line

### Contemporary Style

Perfect for playing Latin, Jazz, Pop or Rock, these guitars feel more like a steel-string acoustic guitar and are ready for anything you can throw at them!

### Thin Body

An 80-90mm body depth and elliptical soundhole deliver a clear, smooth high-end response.

### Standard Depth

Standard 94-100mm body depth and round sound hole produce rich tone.

*NX Series guitars represent a new style of nylon strings guitars designed with pickup systems that faithfully reproduce the tone, character, and dynamics of the instrument.*

*To meet the needs and playing styles of different players, the series offers two body types; the classical style NCX line instruments and the contemporary style NTX line. The nine models that make up the series differ in material type, but all feature Yamaha's exclusive A.R.T. pickup and preamp system, which is designed to deliver natural nylon string tone at a level of realism that has never been achieved before (see page 24).*

# NCX Line

*The NCX line guitars inherit many of the characteristics of classical guitars, such as fingerboard width, neck shape, body thickness, and 12th fret joint. Their cutaway bodies and lower string height offer more flexible playability.*

*The NCX line is designed to provide not only classical guitarists with an instrument that is a pleasure to play, but other guitarists playing a wide range of musical styles from Flamenco to Latin to Popular, and much more.*

*With two choices of materials available for back and sides; Rosewood on the NCX2000R/1200R/900R and Flamed Maple on the NCX2000FM/900FM, guitarists can choose according to tastes and needs.*



NCX2000R

NCX2000FM

NCX1200R

NCX900R

NCX900FM

# NTX Line

*The versatile, contemporary styled NTX line is designed with thinner bodies, narrower necks, 14th fret neck joints, and cutaway designs to provide greater comfort and playability for today's steel-string acoustic and electric players.*

*These instruments are perfect for adding nylon string tone to a wide range of musical styles from Latin to Jazz, Pop to Rock. The lineup features the NTX1200R with rosewood back and sides, the NTX900FM with flamed maple, and the NTX700, available in both natural and a unique black finish.*



NTX1200R

NTX900FM

NTX700

NTX700BL

# NCX2000R/FM

These top-of-the-line models are designed and crafted drawing upon the vast knowledge, craftsmanship, and expertise acquired from over 40 years of hand crafting classical Spanish guitars. Their stunning nylon tone is faithfully reproduced with all its beauty and depth through an advanced electronics and pickup system designed by Yamaha.

**Top:** Solid Hokkaido\* Spruce A.R.E.\*\*

**Back&Side:** NCX2000R: Solid Rosewood NCX2000FM: Solid Flamed Maple

**Neck:** African Mahogany

**Pickup:** A.R.T. Contact Pickups [2-way]

**Preamp:** 3-Band EQ, On board tuner, Black panel, System 61

NCX2000R

NCX2000FM



NCX2000FM **Top:** Solid Hokkaido Spruce A.R.E. **Back&Side:** Solid Flamed Maple **Neck:** African Mahogany

\*1 Hokkaido: North country of Japan

\*2 A.R.E. stands for Acoustic Resonance Enhancement. Please refer to page 26 for more details.

# NCX1200R

The NCX1200R offers all the sophistication of a classical guitar along with outstanding, playability, and rich, high-quality tone in a truly professional instrument.

*Top:* Solid Sitka Spruce

*Back&Side:* Solid Rosewood

*Neck:* African Mahogany

*Pickup:* A.R.T. Contact Pickups [2-way]

*Preamp:* 3-Band EQ, On board tuner, Black panel, System 61



NCX1200R



NCX1200R *Top:* Solid Sitka Spruce *Back&Side:* Solid Rosewood *Neck:* African Mahogany

# NCX900R/FM

A choice of body woods, offering distinct tonal characters, allows the NCX900 to offer traditional style that suits a wide range of players.

**Top:** NCX900R: Solid Sitka Spruce NCX900FM: Solid Engelmann Spruce

**Back&Side:** NCX900R: Rosewood NCX900FM: Flamed Maple

**Neck:** Nato

**Pickup:** A.R.T. Contact Pickups [2-way]

**Preamp:** 3-Band EQ, On board tuner, Black panel, System 61



NCX900R Top: Solid Sitka Spruce Back&Side: Rosewood





# NTX1200R

The NTX1200R is a great looking instrument designed to offer a feel and playability closer to that of a steel stringed acoustic. This professional level model is the perfect choice for adding the warmth of nylon string acoustic tone to your music.

*Top:* Solid Sitka Spruce

*Back&Side:* Solid Rosewood

*Neck:* African Mahogany

*Pickup:* A.R.T. Contact Pickups [2-way]

*Preamp:* 3-Band EQ, On board tuner, Black panel, System 61



NTX1200R



NTX1200R *Top:* Solid Sitka Spruce *Back&Side:* Solid Rosewood *Neck:* African Mahogany

# NTX900FM

The cutaway body design offers extended playability making the NTX900 perfect for use with a wide range of styles. The NTX900FM is a capable instrument, delivering everything from subtle fingerpicking to flatpick solos.

*Top:* Solid Engelmann Spruce

*Back&Side:* Flamed Maple

*Neck:* Nato

*Pickup:* A.R.T. Contact Pickups [2-way]

*Preamp:* 3-Band EQ, On board tuner, Black panel, System 61



NTX900FM *Top:* Solid Engelmann Spruce *Back&Side:* Flamed Maple

# NTX700/NTX700BL

*Like the NTX1200 and NTX900, this model easily accommodates a wide range of musical and playing styles and offers the perfect place to start exploring your music and nylon string sound.*

*Top: Solid Spruce*

*Back&Side: Nato*

*Neck: Nato*

*Pickup: A.R.T. Contact Pickups [2-way]*

*Preamp: 3-Band EQ, On board tuner, Black panel, System 61*



*NTX700BL Top: Solid Spruce Back&Side: Nato*

## Specifications

		NCX			NTX		
		2000	1200	900	1200	900	700
Top	Solid Hokkaido*1 Spruce A.R.E.*2	🛡️					
	Solid Sitka Spruce		🛡️	900R	🛡️		
	Solid Engelmann Spruce			900FM		🛡️	
	Solid Spruce						🛡️
Back & Side	Solid Rosewood	2000R	🛡️		🛡️		
	Solid Flamed Maple	2000FM					
	Rosewood			900R			
	Flamed Maple			900FM		🛡️	
	Nato						🛡️
Body Depth	94-100	🛡️	🛡️	🛡️			
	80-90				🛡️	🛡️	🛡️
Nut Width	52mm	🛡️	🛡️	🛡️			
	48mm				🛡️	🛡️	🛡️
String Length	650 mm (25 9/16")	🛡️	🛡️	🛡️	🛡️	🛡️	🛡️
Electric	SYSTEM 61 A.R.T.-2-way	🛡️	🛡️	🛡️	🛡️	🛡️	🛡️
Color	NT (Natural)	🛡️	🛡️	🛡️	🛡️	🛡️	700
	BL (Black)						700BL

\*1 Hokkaido: North country of Japan

\*2 A.R.E. stands for Acoustic Resonance Enhancement. Please refer to page 25 for more details.

## A.R.T. (Acoustic Resonance Transducer) Pickup/Preamp System

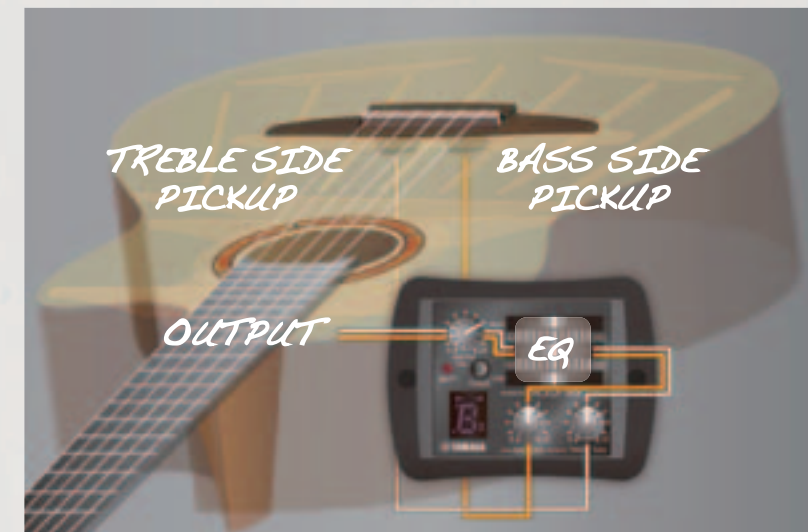
Our A.R.T. pickup system is used on a number of our steel string guitars and has received high acclaim for its superb sound quality, incredible dynamics, and outstanding feedback rejection. Our engineers designed the A.R.T. System 61 especially for the NX Series, to faithfully reproduce the tone and dynamics of nylon strings. Combining a number of exclusive technologies, the A.R.T. system affords the NX Series the versatility to accommodate an incredible range of playing styles from fingerstyle to pick to percussive flamenco, all while retaining the natural tone of the guitar.

### Newly Developed Contact Pickup

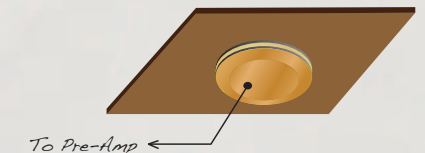
A conventional contact pickup mounted underneath the saddle vibrates freely allowing it to pick up the natural body sound. On the other hand, it can pick up too much body sound resulting in feedback making positioning difficult. By comparison the A.R.T. system used on the NX Series guitars utilizes a multilayer damper in order to absorb excessive vibrations and control feedback. System 61 consists of two pickups mounted on the high and low sides of the guitar, each with its own control to provide the NX Series guitars with flexible tone tailoring.

### Newly Developed Preamp System

Complementing the characteristic warmth and full mid-range tone of the nylon string guitar, the System 61 preamp uses Yamaha's class-leading technology to offer an easily controllable, wide tonal range, making the sound of the NX perfect for any show or playing style. The preamp offers individual volume control for both pickups, delivering a totally natural sound with robust lows and clear highs. A built-in 3-band EQ offers powerful sound shaping while an on-board tuner provides excellent usability during performance.



### Contact Pickup



Tone Adjuster  
(Multiple Layer  
Including Wood)



Brass Plate



Piezo Crystal

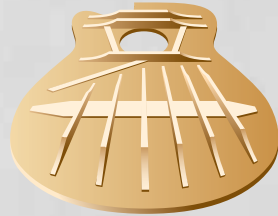


Copper Shield



## Sound Character Chart

The bracing on the underside of the top plays an important role in controlling and transmitting string vibration received through the bridge to the entire body. The bracing design used in the NX Series is a fan type design like that typically found in classical guitars. In addition to delivering a rich, uncompromising tone it lets you obtain the sound you want by allowing the guitar to respond effortlessly to your playing.



### NCX/NTX Models

This bracing design focuses on delivering the best of nylon string tone, its warmth along with excellent response. It produces a well-balanced tone over the instrument's entire range and enables these guitars to accommodate a wide range of playing and musical styles.



### NCX2000 Model

The bracing design on the NCX2000 is based the design used on our top-of-the-line handcrafted GC Series classical guitars. This design faithfully reproduces the finest details in your playing and delivers a bright, clear high range with a deep, rich low end.

## Rosewood and Flamed Maple



Rosewood

Rosewood is a tropical hardwood that has long been the material of choice for acoustic guitar sides and backs. Harder and heavier than maple, it provides firm support for the guitar's resonating top and delivers rich, well-balanced overtones. Its warm quality is perfect for nylon string tone.



Flamed Maple

Also known as "curly maple", flamed maple is prized for its bright, stunning appearance. Hard and strong it is often used for necks on electric guitars. When used for backs and sides it produces a crisp, clear, less resonant tone that cuts through well making it great for lead playing.

## A.R.E. (Acoustic Resonance Enhancement)

Applied to the NCX2000R/2000FM

A.R.E. (Acoustic Resonance Enhancement) is an original wood reforming technology developed by Yamaha.

Through precise control of temperature, humidity, and atmospheric pressure, the molecular properties of the wood can be manipulated into a more acoustically ideal condition, similar to the molecular characteristics of woods in instruments that have been played for years. In NX Series guitars, this treatment results in a sound close to that of a vintage guitar that has been played for years. It produces a sharper tone while simultaneously controlling dissonance in the high range.

Instruments that have undergone this process have received high marks from a great number of musicians. Their evaluations are nearly identical to those for guitars that have been played for years, and their comments often include terms such as "well settled", "mature", "warm", "excellent resonance", and "clear".



## Form Case



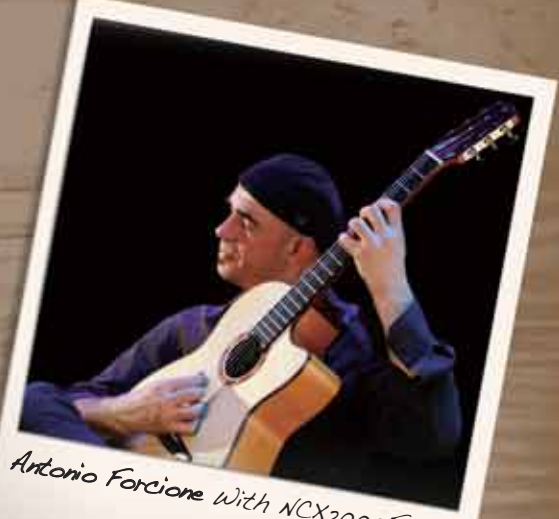
Accompanies the NCX2000, NCX1200, NTX1200

## NX Artists



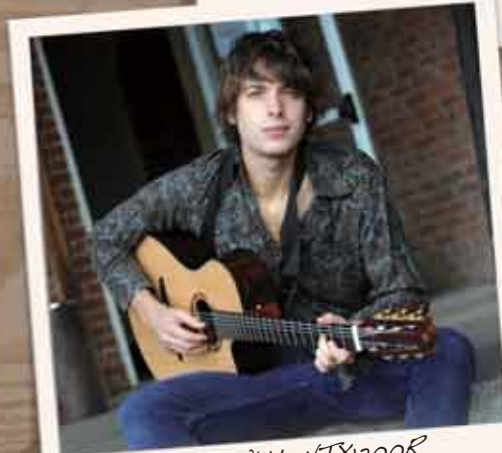
Lee Ritenour With NCX2000R

USA



Antonio Forcione With NCX2000FM

Italy



Paulo Nutini With NTX1200R

Scotland



Rodrigo y Gabriela with NCX Custom NTX Custom

Mexico

Please visit nx site

[www.yamaha.co.jp/english/product/guitar/nx/](http://www.yamaha.co.jp/english/product/guitar/nx/)