

Previous Previous Amp Editor for Win version information

V1.4.1

New Features, Improvements

Amp Editor V1.4.1

- Project file compatibility is improved: XMV Input Source settings are converted and applied properly when loading a project file (.yae) created with Amp Editor V1.3.3 or earlier.

XMV V3.20

- Now supports AES67 mode and Device Lock of Dante.

Fixed Bugs

Amp Editor

None

XMV

None

Known issue

- If the power of the network switch located between the computer and the XMV is repeatedly restarted, there are rare occasions in which the XMV can no longer be recognized from Amp Editor. If this occurs, the XMV must be restarted.

NOTICE

- It is not possible for an XMV unit assigned to a MTX system to be monitored/controlled from Amp Editor. After an XMV unit has been used within the MTX system, that XMV unit must be initialized if you want to monitor/control it from Amp Editor.

V1.4.0-2

New Features, Improvements

Amp Editor V1.4.0

- XMV firmware V3.1 is now supported. XMV V3.1 new features such as Input Source Select and Input Redundancy can newly be configured with XMV Device Properties window. The XMV firmware is included in the downloaded zip file.

XMV V3.11

- The limiter parameter for protecting the amplifier has been improved and adjusted to enhance hardware performance.

XMV V3.10

- Added a function in which the input source could be set as digital or analog for each channel independently.
- Added the following redundancy functions.
 - Backup mode: Switches to analog input when the pilot tone of the digital input is interrupted due to a broken connection or other problem.

- Override mode: Switches the digital input to a specified analog input when analog audio is detected.

Fixed Bugs

Amp Editor

None

XMV

None

Known issue

- If the power of the network switch located between the computer and the XMV is repeatedly restarted, there are rare occasions in which the XMV can no longer be recognized from Amp Editor. If this occurs, the XMV must be restarted.

NOTICE

- It is not possible for an XMV unit assigned to a MTX system to be monitored/controlled from Amp Editor. After an XMV unit has been used within the MTX system, that XMV unit must be initialized if you want to monitor/control it from Amp Editor.
- Amp Editor V1.3.3 or earlier is missing the function that allows selection of the input source of an XMV per channel. In the case synchronizing a file which was made using Amp Editor V1.3.3 or earlier with XMV V3.10 or later, the input source setting will be initialized.

V1.4.0

New Features, Improvements

Amp Editor

- XMV firmware V3.1 is now supported. XMV V3.1 new features such as Input Source Select and Input Redundancy can newly be configured with XMV Device Properties window. The XMV firmware is included in the downloaded zip file.

XMV

- Added a function in which the input source could be set as digital or analog for each channel independently.
- Added the following redundancy functions.
 - Backup mode: Switches to analog input when the pilot tone of the digital input is interrupted due to a broken connection or other problem.
 - Override mode: Switches the digital input to a specified analog input when analog audio is detected.

Fixed Bugs

Amp Editor

None

XMV

None

Known issue

- If the power of the network switch located between the computer and the XMV is repeatedly restarted, there are rare occasions in which the XMV can no longer be recognized from Amp Editor. If this occurs, the XMV must be restarted.

NOTICE

- It is not possible for an XMV unit assigned to a MTX system to be monitored/controlled from Amp Editor. After an XMV unit has been used within the MTX system, that XMV unit must be initialized if you want to monitor/control it from Amp Editor.

V1.3.3

New Features, Improvements

Amp Editor

- XMV firmware V3.0 is now supported. The XMV firmware is included in the downloaded zip file.

XMV

V1.30

- Up to 8 simultaneous external remote control connections are now possible via the NETWORK connector or Dante connector.

V1.31

- In the Dante model, Dante Device Labels can be changed arbitrarily and permanently. These changes can be made from the Dante Controller software.

However, since the five initial characters are used for device identification (decided by UNIT ID), do not change them they should not be changed. The 6th character and subsequent ones can be changed arbitrarily.

Moreover, the following rules in Dante Device Label are common to all Dante devices (and not just this one):

- Conventional characters (alphabetical uppercase or lowercase), numerals, or hyphens (-) can be used.
- A maximum of 31 characters can be entered.

Before firmware V1.30, if the Dante Device Label was changed, the default Dante Device Label would automatically be re-written when the power supply is rebooted

Fixed Bugs

Amp Editor

None

XMV

V1.30

- Fixed a problem which caused an output level fade-in, following a 1000 or more second's wait for an audio input signal to be applied to the amplifier.
- Fixed a problem which incorrectly set the value of HPF to 40 Hz instead of 80 Hz, if initialization was performed with any pair of output channels set to High Impedance mode.
- Fixed a problem in which when turning off the power, a popping noise may occur. (Dante model)

V1.32

- Fixed a problem in which an error was returned and the parameter value was not changed, after a "setn" remote control command was received with a value outside of the specified range. Please refer to the Remote Control Protocol Specification document to check the correct behavior when a value outside the valid range is received.

- Fixed a problem which incorrectly set the value of HPF to 40 Hz instead of 80 Hz, if initialization was performed with any pair of output channels set to High Impedance mode.

Known issue

- If the power of the network switch located between the computer and the XMV is repeatedly restarted, there are rare occasions in which the XMV can no longer be recognized from Amp Editor. If this occurs, the XMV must be restarted.

NOTICE

- It is not possible for an XMV unit assigned to a MTX system to be monitored/controlled from Amp Editor. After an XMV unit has been used within the MTX system, that XMV unit must be initialized if you want to monitor/control it from Amp Editor.

V1.3.2-2

New Features, Improvements

Amp Editor

- XMV firmware V2.0 is now supported. The XMV firmware is included in the downloaded zip file.

XMV

V1.30

- Up to 8 simultaneous external remote control connections are now possible via the NETWORK connector or Dante connector.

V1.31

- In the Dante model, Dante Device Labels can be changed arbitrarily and permanently. These changes can be made from the Dante Controller software.

However, since the five initial characters are used for device identification (decided by UNIT ID), do not change them they should not be changed. The 6th character and subsequent ones can be changed arbitrarily.

Moreover, the following rules in Dante Device Label are common to all Dante devices (and not just this one):

- Conventional characters (alphabetical uppercase or lowercase), numerals, or hyphens (-) can be used.
- A maximum of 31 characters can be entered.

Before firmware V1.30, if the Dante Device Label was changed, the default Dante Device Label would automatically be re-written when the power supply is rebooted

Fixed Bugs

Amp Editor

None

XMV

V1.30

- Fixed a problem which caused an output level fade-in, following a 1000 or more second's wait for an audio input signal to be applied to the amplifier.
- Fixed a problem which incorrectly set the value of HPF to 40 Hz instead of 80 Hz, if initialization was performed with any pair of output channels set to High Impedance mode.

- Fixed a problem in which when turning off the power, a popping noise may occur. (Dante model)

V1.32

- Fixed a problem in which an error was returned and the parameter value was not changed, after a “setn” remote control command was received with a value outside of the specified range. Please refer to the Remote Control Protocol Specification document to check the correct behavior when a value outside the valid range is received.
- Fixed a problem which incorrectly set the value of HPF to 40 Hz instead of 80 Hz, if initialization was performed with any pair of output channels set to High Impedance mode.

Known issue

- If the power of the network switch located between the computer and the XMV is repeatedly restarted, there are rare occasions in which the XMV can no longer be recognized from Amp Editor. If this occurs, the XMV must be restarted.

NOTICE

- It is not possible for an XMV unit assigned to a MTX system to be monitored/controlled from Amp Editor. After an XMV unit has been used within the MTX system, that XMV unit must be initialized if you want to monitor/control it from Amp Editor.

V1.3.2

New Features, Improvements

Amp Editor

- XMV firmware V2.0 is now supported. The XMV firmware is included in the downloaded zip file.

XMV

V1.30

- Up to 8 simultaneous external remote control connections are now possible via the NETWORK connector or Dante connector.

V1.31

- In the Dante model, Dante Device Labels can be changed arbitrarily and permanently. These changes can be made from the Dante Controller software.

However, since the five initial characters are used for device identification (decided by UNIT ID), do not change them they should not be changed. The 6th character and subsequent ones can be changed arbitrarily.

Moreover, the following rules in Dante Device Label are common to all Dante devices (and not just this one):

- Conventional characters (alphabetical uppercase or lowercase), numerals, or hyphens (-) can be used.
- A maximum of 31 characters can be entered.

Before firmware V1.30, if the Dante Device Label was changed, the default Dante Device Label would automatically be re-written when the power supply is rebooted

Fixed Bugs

Amp Editor

None

XMV

V1.30

- Fixed a problem which caused an output level fade-in, following a 1000 or more second's wait for an audio input signal to be applied to the amplifier.
- Fixed a problem which incorrectly set the value of HPF to 40 Hz instead of 80 Hz, if initialization was performed with any pair of output channels set to High Impedance mode.
- Fixed a problem in which when turning off the power, a popping noise may occur. (Dante model)

V1.32

- Fixed a problem in which an error was returned and the parameter value was not changed, after a "setn" remote control command was received with a value outside of the specified range. Please refer to the Remote Control Protocol Specification document to check the correct behavior when a value outside the valid range is received.
- Fixed a problem which incorrectly set the value of HPF to 40 Hz instead of 80 Hz, if initialization was performed with any pair of output channels set to High Impedance mode.

Known issue

- If the power of the network switch located between the computer and the XMV is repeatedly restarted, there are rare occasions in which the XMV can no longer be recognized from Amp Editor. If this occurs, the XMV must be restarted.

NOTICE

- It is not possible for an XMV unit assigned to a MTX system to be monitored/controlled from Amp Editor. After an XMV unit has been used within the MTX system, that XMV unit must be initialized if you want to monitor/control it from Amp Editor.

V1.3.1

New Feature

- The digital input sensitivity of XMV amplifiers can now be changed in the "Device Properties" window. However, the XMV firmware version must be V1.20 or later. The XMV firmware is included in the downloaded zip file.

Fixed Bug

- Fixed the problem that had caused the index units in the Meter display of a list window created in the "System View Creator" dialog box to be displayed according to the setting in the TXn "Preference" dialog box, regardless of the model.

Known issue

- If the power of the network switch located between the computer and the XMV is repeatedly restarted, there are rare occasions in which the XMV can no longer be recognized from Amp Editor. If this occurs, the XMV must be restarted.

NOTICE

- It is not possible for an XMV unit assigned to a MTX system to be monitored/controlled from Amp Editor. After an XMV unit has been used within the MTX system, that XMV unit must be initialized if you want to monitor/control it from Amp Editor.

V1.3.0

New Features

- The following models are now supported. It is possible to use Amp Editor to monitor and control XMV series units. However, the XMV firmware version must be V1.12 or later.

XMV4140

XMV4280

XMV8140

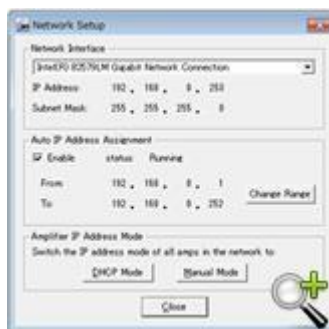
XMV8280

XMV4140-D

XMV4280-D

XMV8140-D

XMV8280-D



- It is now possible to turn off the Auto IP Address Assignment function.

Fixed Bugs



- Fixed the problem in which the "Output level too high" alert enable/disable check box for the PC-N and Tn series was not shown in the "Alert Setup" dialog box, preventing this setting from being made.



- Fixed the problem in which the "Preference" dialog box "Peak Hold" check box and "Enable Level Meters" check box settings were not linked with the settings of the Device Detail View context menu.
- Fixed the problem that had caused the channel name display to be blank in the Rename Label menu of the Tree View window when opening a project file to which any channel name was assigned.
- Fixed the problem that had caused the meter display not to be cleared correctly when the system was taken offline while meters were displayed.

Known issues

- If the power of the network switch located between the computer and the XMV is repeatedly restarted, there are rare occasions in which the XMV can no longer be recognized from Amp Editor. If this occurs, the XMV must be restarted.

NOTICE

- It is not possible for an XMV unit assigned to a MTX system to be monitored/controlled from Amp Editor. After an XMV unit has been used within the MTX system, that XMV unit must be initialized if you want to monitor/control it from Amp Editor.

V1.2.1

New Features

- (TXn only) Added Partial Lock in the "Utility" dialog box -> [Setup] tab -> [Front Panel Operation] -> [Panel], enabling locking of panel operations other than mute, attenuation, and library recall.

Improvement

- The library items for the third-party speakers are now available in the Speaker Processor component library.

Fixed Bugs

- Fixed a problem in which the IP address for the device(s) may not have been assigned, when "IP Address Mode" was repeated and changed using the [DHCP] button and the [MANUAL] button of the "Network Setup" dialog box.
- Fixed a problem in which the project could not be saved (over written) when the project file icon was double-clicked and the Amp Editor was started.
- Fixed a problem in which the Amp Editor was terminated in a situation when the power of the device was quickly turned off and on when the Amp Editor was online.

- Fixed a problem in which the ID may be displayed with "the right value+1" in the scene list of the "Scene Link Manager" dialog box.
- Fixed a problem in which the short-cut key [Ctrl]+[N] was active when online.
- Fixed a problem in which parameters of the controls in a custom control panel may not reflect a scene recall.
- Fixed a problem in which the Amp Editor was frozen when the power of all devices were turned on again after being turned off while the "Device Information" dialog box was displayed.

V1.2.0

New Features

- The following features have been added to the Tree View window:
 - New [Expand all], [New Device], and other tool buttons have been added for improved operability.
 - It is now possible to drag and drop devices from the workspace to the Unmatched Device window.
 - It is now possible to move devices from the Unmatched Device window to the workspace via a contextual-menu [Move] command.
- A [DEVICE BUSY] indicator added to the main window menu bar indicates when data is being written to connected devices.
- A [Device Properties] button added to the Device Detail View window opens the Device Properties window.

- An Output Voltage Calculator added to the [Limiter] tab of the Device Properties window can be used to calculate threshold values for the Voltage Limiter.
- The following features have been added to Signal Path View:
 - The Device Properties window [General] tab now opens when the [Gain/Sens.], [Redundancy], or [Amp Mode] button is clicked.
 - The Device Properties window [Limiter] tab now opens when the [Limiter] button is clicked.
- The following features have been added to the Preferences dialog box:
 - A new setting allows the progress dialog box that appears when a scene is recalled to close automatically when the recall operation has finished.
 - A new setting allows the progress dialog box that appears when scene data is being edited to close automatically when the edit operation has finished.

Improvements

- The Device Properties dialog box is now a Device Properties window that allows parameters to be edited while referring to other windows.
- A new User Library folder allows convenient organization of library files that previously had to be stored in separate project folders. The user Library folder can be specified via the [General] tab in the Preferences dialog box. Library files stored in the User Library folder can be copied to the project folder when the project is stored.
- The following library items are displayed in the Library [RECALL] menu:
 - Library items in the User Library folder.
 - Pre-installed library items.
 - Library items stored in a project folder.

- It is now possible to create custom control panels that are larger than the display resolution of the computer on which the Amp Editor is running.
- Some menu names in the Main Panel window have been revised.
- The order of the items in the Tree View window contextual menu has been revised.

Fixed Bugs

- A bug that caused the Main Panel window to be displayed incorrectly sometimes when the Amp Editor was launched has been fixed.
- Project save/open, sync, and display performance when a large number of devices are registered has been improved.
- A bug that prevented recall of library files with file names that contained a period (".") has been fixed.
- A bug that caused an unnecessary dialog box to be displayed when an unedited project was closed has been fixed.
- A bug that caused windows to extend beyond the active display area when the Amp Editor was used with multiple monitors has been fixed.
- A problem with the XP, XM, and XH series amplifier [ON]/[STANDBY] button has been fixed.
- A bug that caused components to be changed regardless of the Emergency Scene Recall device Recall Safe settings has been fixed.
- A bug that caused synchronization to fail if the Scene Manager dialog box [Insert] button was clicked has been fixed.

- A bug that caused the Amp Editor to freeze if different computer and device network addresses were used has been fixed.
- A bug that caused Scene 00 to be recalled on devices with scenes that had not been stored if the Scene link Manager [Recall] button was clicked has been fixed.

V1.1.0

New Features

- The ACD1 is now supported.
- You can monitor and control compatible amplifiers (Tn/PC-1N/PC-N/XP/XH/XM series) connected to the ACD1.
- The added "GPI" dialog box etc. enables you to make the GPI input/output settings on the ACD1.
- The firmware V1.10 of TXn series amplifiers is now supported.
- The GAIN function was added to each slot input channel, which enables you to easily make input signal levels consistent between analog and digital (slot) inputs.
- The Scene Recall Safe function was added.

Improvements

- The oscillator settings of TXn series amplifiers are now excluded from scene functions, so that the settings are not affected by scene recall operations.

- Operation ease was improved when copying and pasting parameter settings among amplifiers, due to the fact that copying while online and pasting to the other model amplifiers within the same series are now available.
- The legibility on System View Creator was improved, due to the fact that the design of each amplifier Type has been revised.
- Operation ease on the "Alert Setup" dialog box was improved by revising the design.
- The alert setup files can now be saved and loaded separately for each amplifier type.
- The channel names on Device Detail View will be updated when the corresponding devices are detected on the network.
- The Output Mute parameters can now be set to Local Link (Parameter Link).
- When storing a library item as a file in the Speaker Processor library, selecting the file with security (extension .cep) now also saves the file without security (.ce2) at the same time.
- The library items for the third-party speakers are now available in the Speaker Processor component library.

Fixed Bug

- Fixed a problem in which some windows would not appear when the computer display setting was switched from multi-display to single-display.

V1.0.0

New Feature

Release version.